

ESSICK MIXERS

MULTIQUIP



*Plaster/Mortar
and Concrete Models*

MQ
MULTIQUIP

Essick Plaster/Mortar Mixers

12 cubic feet; steel or poly drums

"The choice of the professional mason."

Professionals prefer Essick mixers. For more than 75 years, Essick has been the leader in quality, innovation and engineering. Our heavy duty mixers are reliable, easy to maintain, and are available in a full range of sizes and engine configurations for most any application.

Choose from steel or EasyClean™ polyethylene drums. Any way you go, Essick delivers.

Available in 7, 9, and 12 cubic foot capacities, with your choice of power and drum materials.

Model EM-120P-H
(12 cu. ft.)



EasyClean™ models feature polyethylene drums.

Steel or EasyClean™ polyethylene drums.

High strength cast iron paddle arms with rubber blades for a clean, uniform mix.

Rugged 14 gauge steel engine covers with punched ventilation openings for increased cooling and added strength.

Heavy duty safety grate with built-in bag cutter.

Durable paddle shaft of 1 3/4" square hardened steel. 12 spring-loaded self-adjusting seals. No greasing required.

Heavy duty removable tow tongue made of tough schedule 80 steel.

Solid 5/8" square axle with large B78x13" tires for smooth towing. Suspension springs standard.

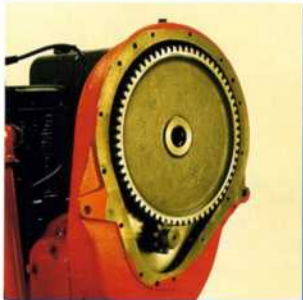
Available with loop coupler, 2-inch ball coupler or pin-type coupler.

Model EM-120S (12 cu. ft.) — available with mechanical or hydraulic drive.

Essick Plaster/Mortar Mixers

12 cubic feet • Steel or poly drums • Mechanical and hydraulic drive

Essick 12 cubic foot plaster/mortar mixers are available with your choice of mechanical or hydraulic drives.

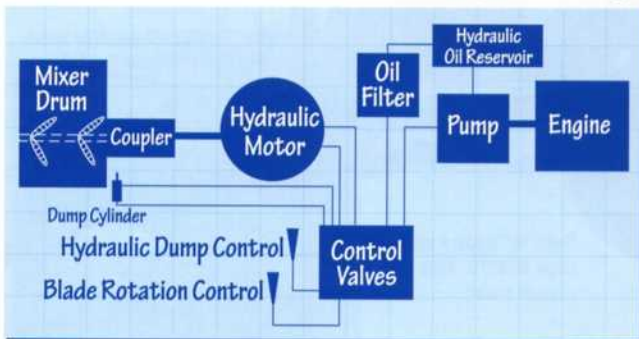


Mechanical Drive

Drive gear and multiple disc clutch are immersed in oil and fully protected for long, trouble-free life. Eliminates wear components like V-belts, external gears and pulleys. Allows larger, stiffer mixes.

Hydraulic Drive

- **Mixes larger, stiffer loads** — smooth and consistent. Eliminates high wear components, V-belts, gears and clutches.
- **Hydraulic dump system** — allows high production with minimal operator fatigue (optional).
- **Greatly reduced maintenance.**
- **Dual controls** — mixing blades and optional hydraulic dump.
- **Rugged 14 gauge steel engine covers** with punched ventilation openings for increase cooling and added strength.
- **Built-in hydraulic safety relief system** — immediately disengages itself in case an object becomes wedged in the drum. Automatically resets when problem is corrected.
- **Seal system** — double-sealed bearings with spring-loaded greasable shaft seals (on hydraulic mixers only).



Innovative hydraulic drive system eliminates mechanical wear components. Optional hydraulic dump provides easy operation.



Easily accessible dual controls for mixing blades and hydraulic dump.

Essick Plaster/Mortar Mixers

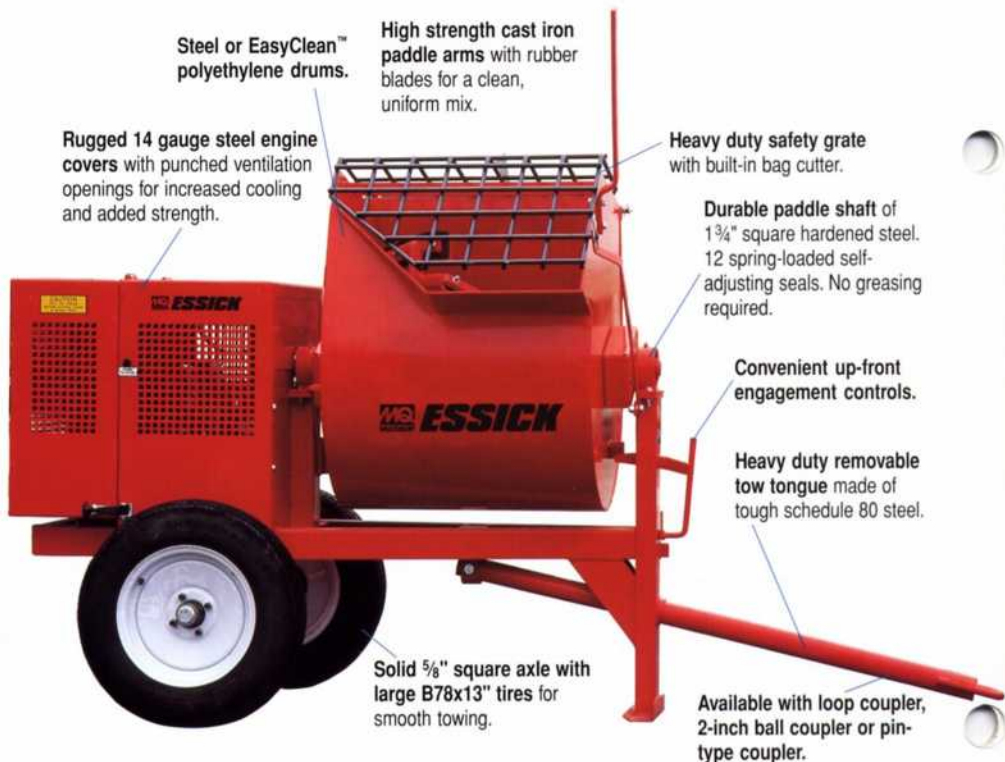
7 and 9 cubic feet • Steel or poly drums

"The choice of the professional mason."

Available in 7, 9, and 12 cubic foot capacities, with your choice of power and drum materials.



EasyClean™ models feature polyethylene drums.



Model EM-900S (9 cu. ft.)

Essick Mixers — Specifications

Plaster/Mortar Mixers — Steel Drum Models

| Model | EM-700S | EM-900S | EM-120S-M (Mechanical) | EM-120S-H (Hydraulic) |
|------------------------------------|---|---|---|---|
| Capacity — cu.ft. (liters) | 7 (93) | 9 (248) | 12 (340) | 12 (340) |
| Capacity — bags | 1½ to 2½ | 2½ to 3½ | 3½ to 4 | 3½ to 4 |
| Power Sources | 1.5 HP 10 115/230V Electric 5 HP B&S I/C 8 HP B&S I/C 8.5 HP Robin OHV 5.5 HP Honda 8 HP Honda | 3 HP 10 230V Electric 8 HP B&S I/C 8.5 HP Robin OHV 8 HP Honda | 5 HP 10 230/460V Electric 5 HP 30 230/460V Electric 11 HP Honda 9.2 HP Wisc. AENLD-3 | 5 HP 10 230/460V Electric 5 HP 30 230/460V Electric 13 HP Honda |
| Engine cover material | Steel | Steel | Steel | Polyethylene |
| Average weight* — lbs. (kg) | 788 (357) | 870 (395) | 1,090 (494) | 1,038 (471) |
| Length w/tongue x W x H — in. (cm) | 98x50x56 (248x127x142) | 98x50x59 (248x127x150) | 82x51x60 (208x130x152) | 82x51x60 (208x130x152) |
| Height including handle — in. (cm) | 73 (185) | 77 (196) | 75 (191) | 75 (191) |
| Discharge height — in. (cm) | 21 (53) | 21 (53) | 17 (43) | 17 (43) |
| Drive | V-Belt/Gear | V-Belt/Gear | Mechanical | Hydraulic |
| Dump action | Manual | Manual | Manual | Manual (Optional hydraulic dump) |

* Mixer weight shown is an average; exact weight is dependent upon power source.

Your MQ/Essick Dealer is:

NORTHWEST EQUIPMENT
2011 SO 341ST PLACE
FEDERAL WAY WA 98003

1-800-717-1338



MULTIQUIP INC.
 POST OFFICE BOX 6254
 CARSON, CA 90749
 310-537-3700 • 800-421-1244
 FAX: 310-537-3927
 E-MAIL: mq@multiquip.com
 WWW: multiquip.com

Atlanta • Boise • Dallas • Houston • Newark
 Montreal, Canada • Manchester, UK • Rio De Janeiro, Brazil • Guadalajara, Mexico